

The Future Plans for Reading Buses

Robert Williams, Chief Executive Officer





- Municipally-owned, multi award winning, independent
- Run on a self sustaining financial basis
- Turnover \approx £40m, >28m passenger journeys per year
- 202 vehicles (daily requirement 169)
 - 13 diesel/electric hybrid
 - 63 bio-gas
 - 1 electric
- Climate Emergency – can we be carbon neutral by 2030?



Our gas

Gas fed into grid



Normal gas pipeline



Drawn out at depot



Buses filled



Reading buses



What about electric?

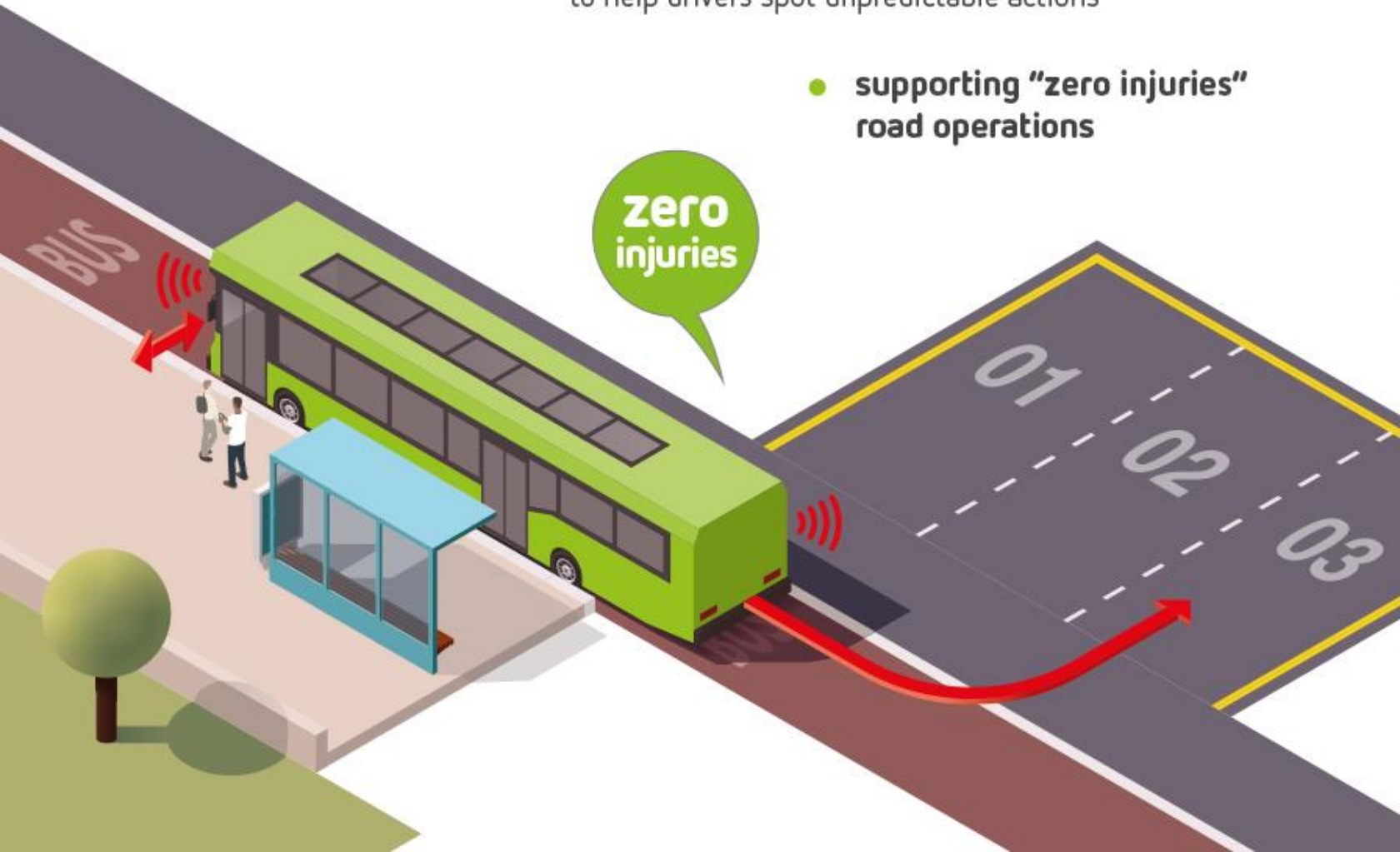
- Battery capacity / vehicle range
- Source of electric and battery
- How to charge it



- **automated aids**
assisting drivers through tight spaces,
pulling in tight to the kerb, or parking in the depot

- **all round sensors**
to help drivers spot unpredictable actions

- **supporting "zero injuries"
road operations**



Tech Lab

Our Tech Lab opened over a year ago for partnering.

Gives access to:

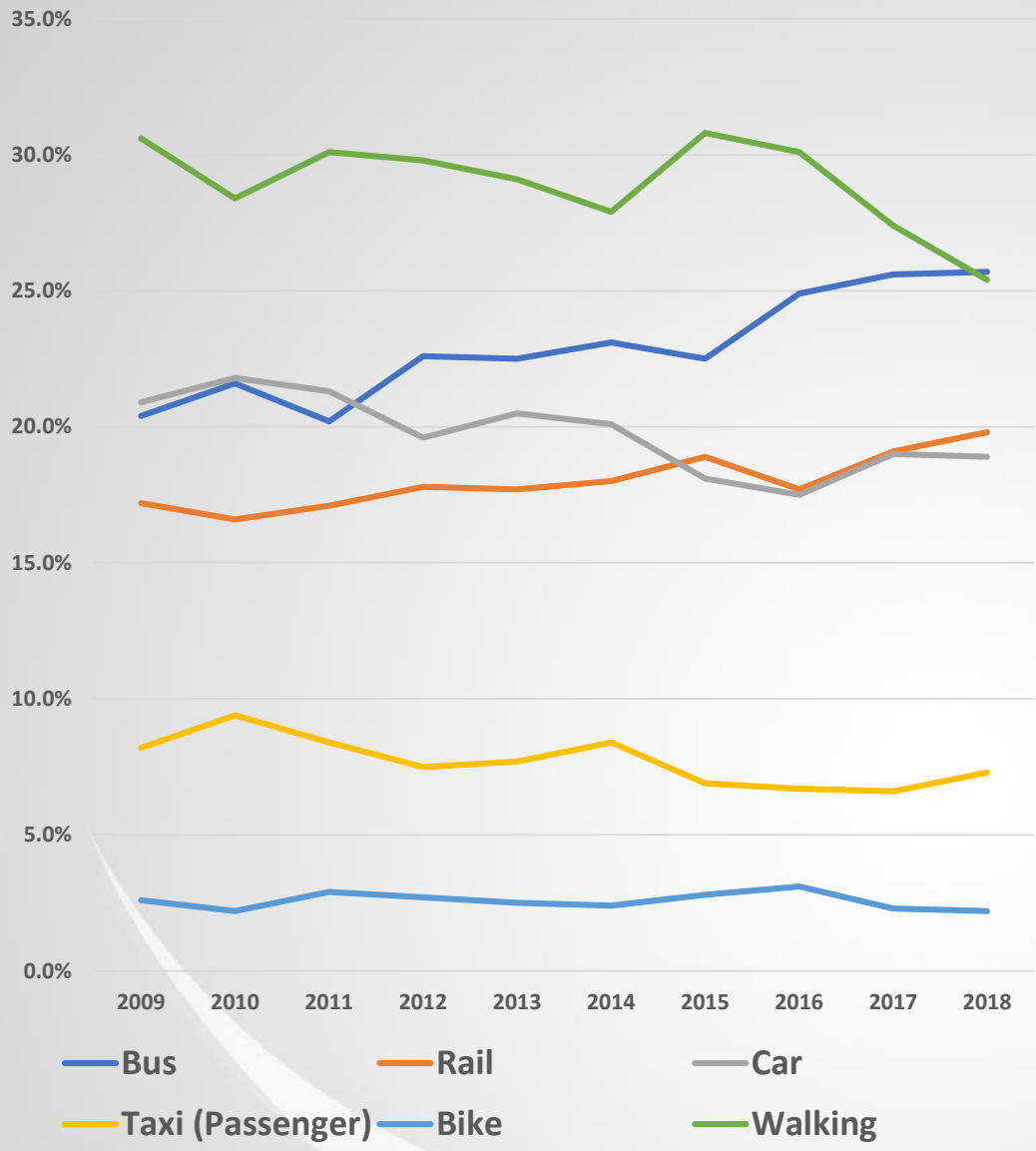
- Our data (level 1 & 2)
- 24/7 working space
- Our fleet & workshop
- Our network of suppliers, partners & stakeholders
- Route to investors
- “Sympathetic” proving ground for ideas & tech



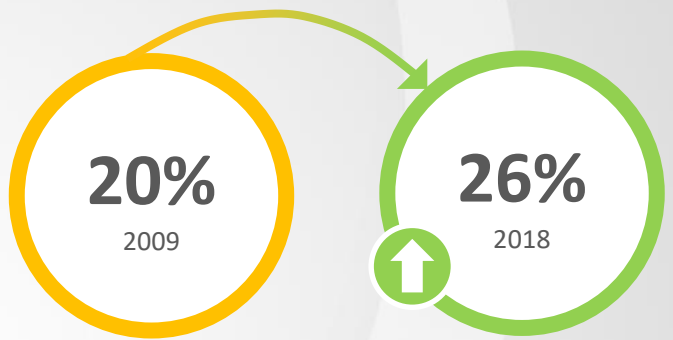
Bus Priority = Tackle Congestion



Readingbuses



Modal share



28% more journeys
into and out of central Reading



Source: Peter Brett Associates annual cordon count 2018